

Seynaeve Bite Suit Self Measurement Form



Name:	
Address:	
Country:	
Telephone:	
Cell Phone:	
Fax:	
Email:	
Date:	

Sex:	<input type="checkbox"/> Male
	<input type="checkbox"/> Female
Weight:	KG
Height:	CM

Please Check the Item(s) Your are Ordering:

Belgian Ring Full Suit	
Belgian Ring Jacket	
Belgian Ring Pants	
Mondio / Fench Ring Competition Full Suit	
Mondio / Fench Ring Competition Jacket	
Mondio / Fench Ring Competition Pants	
Mondio / Fench Ring Semi Training Full Suit	
Mondio / Fench Ring Semi Training Jacket	
Mondio / Fench Ring Semi Training Pants	
Mondio / Fench Ring Training Full Suit	
Mondio / Fench Ring Training Jacket	
Mondio / Fench Ring Training Pants	

Kimono Training Full Suit	
Kimono Training Jacket	
Kimono Semi Training Full Suit	
Kimono Semi Training Jacket	

*Kimono full suit comes with the Mondio / French Ring Semi Training or Training style pants, depending upon the option you choose.

Color Selection:

*Colors available on pages 4-5. **White** on the chart indicates color 1 and **gray** indicates color 2.

Color 1:

Color 2:

Have another person measure you! Your bite suit will fit to the measurements that you have supplied. Perfection is essential in quality bite suits, so please be sure that the measurements are accurate. Take all measurements **wearing the clothes** that you will use under the bite suit usually. **Give exact measurements**, we will make any allowances necessary. **Stand up straight** while you are being measured.

	Description	Measurement
1	Chest Circumference (Largest arm pit height)	CM
2	Waist Circumference (At level of the navel)	CM
3	Hips Circumference (Largest across backside)	CM
4	Thigh Circumference (Largest)	CM
5	Calf Circumference (Largest)	CM
6	Forearm Circumference (Largest)	CM
7	Bicep Circumference (Largest)	CM
8	Neck to End of Sleeve - Look straight ahead and bend the arm at front of the body. Measure length from side of neck under the ear over the top of shoulder and over the outside of the elbow to the place where you want the sleeve to end.	CM
9	Sleeve - Look straight ahead and measure at the side from top of shoulder to where you want the sleeves to end.	CM
10	Outseam - Measure from side of waist at level of navel to the ankle.	CM
11	Inseam - Measure from crotch to the ankle.	CM
12	Shoulders - Measure shoulders at the back of the body from one side to the other.	CM
13	Jacket Length - Measure from nape of neck to where you want the jacket to end.	CM

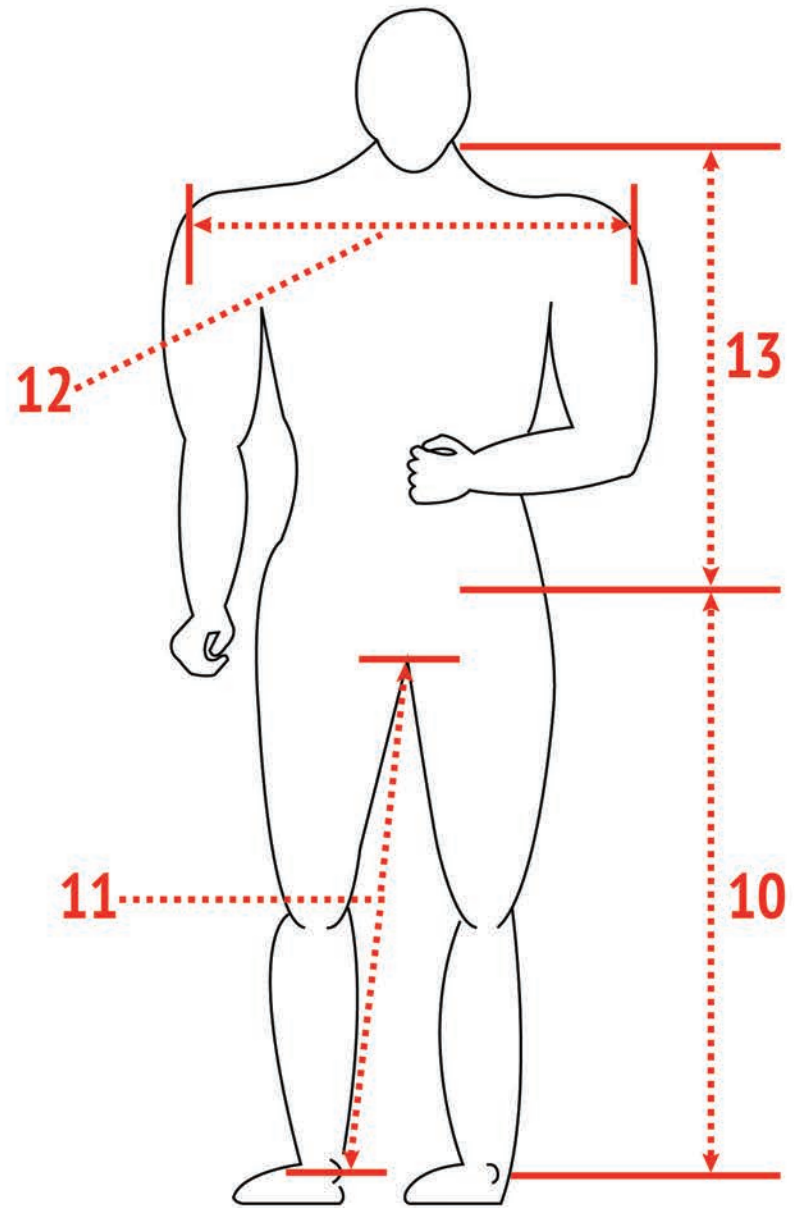
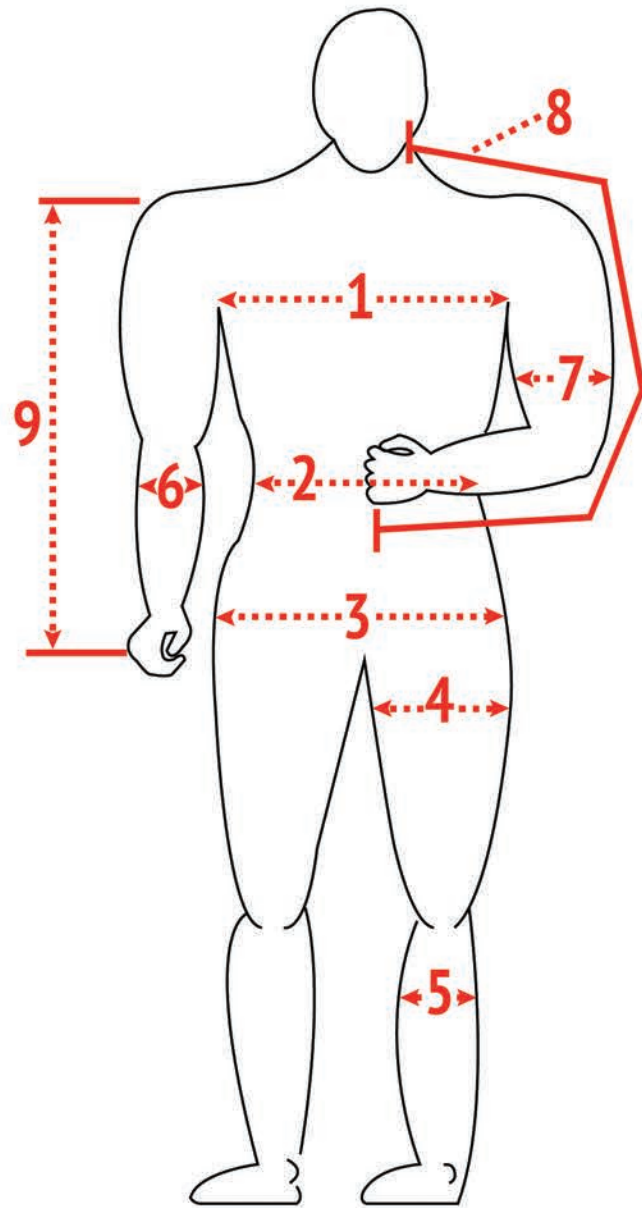
SPECIAL INSTRUCTIONS



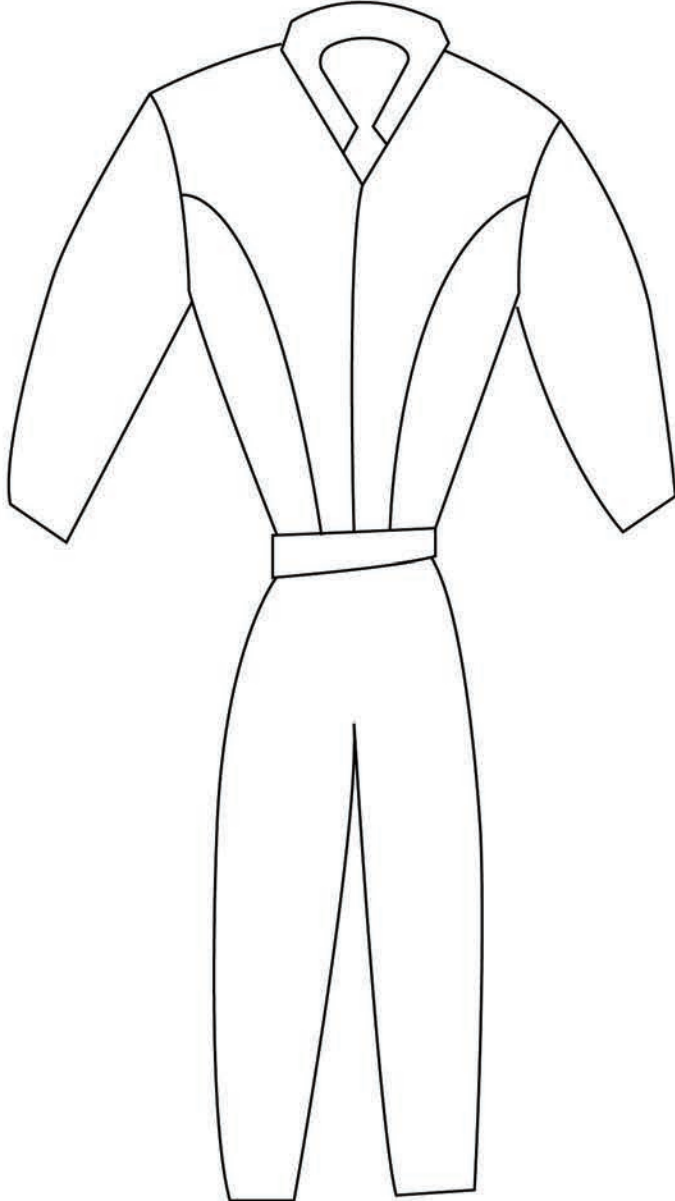
Weight:

KG | Height:

CM



1 Color Suit

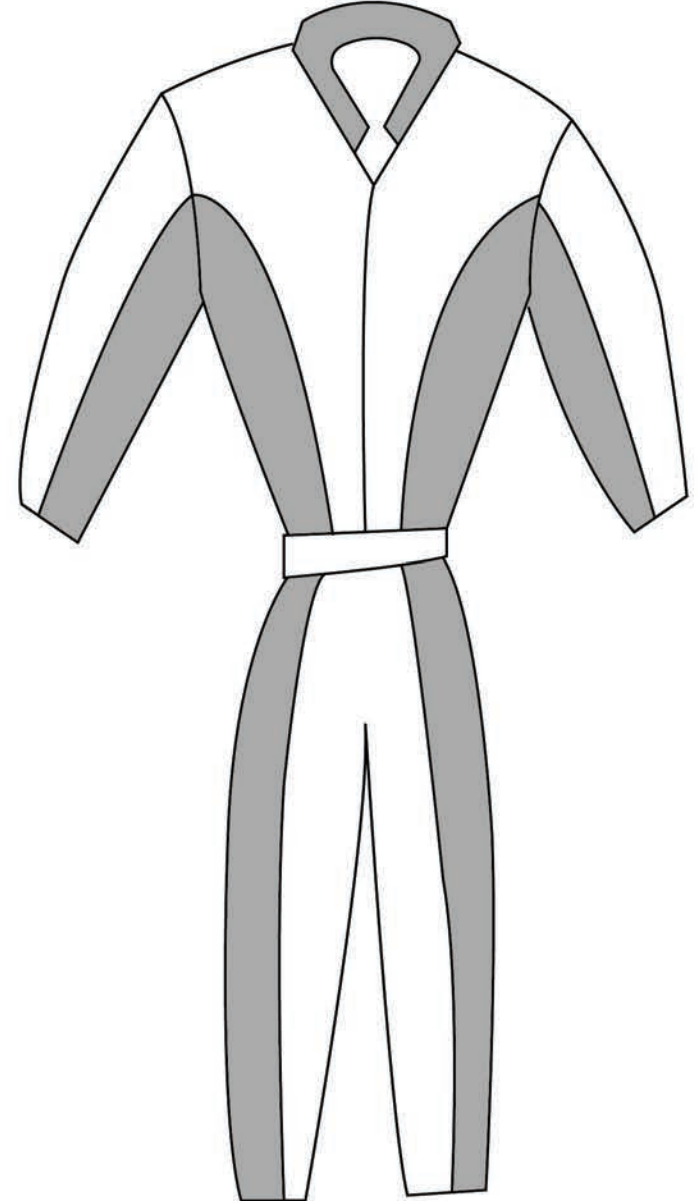


**Belgian Ring Suit
&
Mondio / French
Ring Suit**

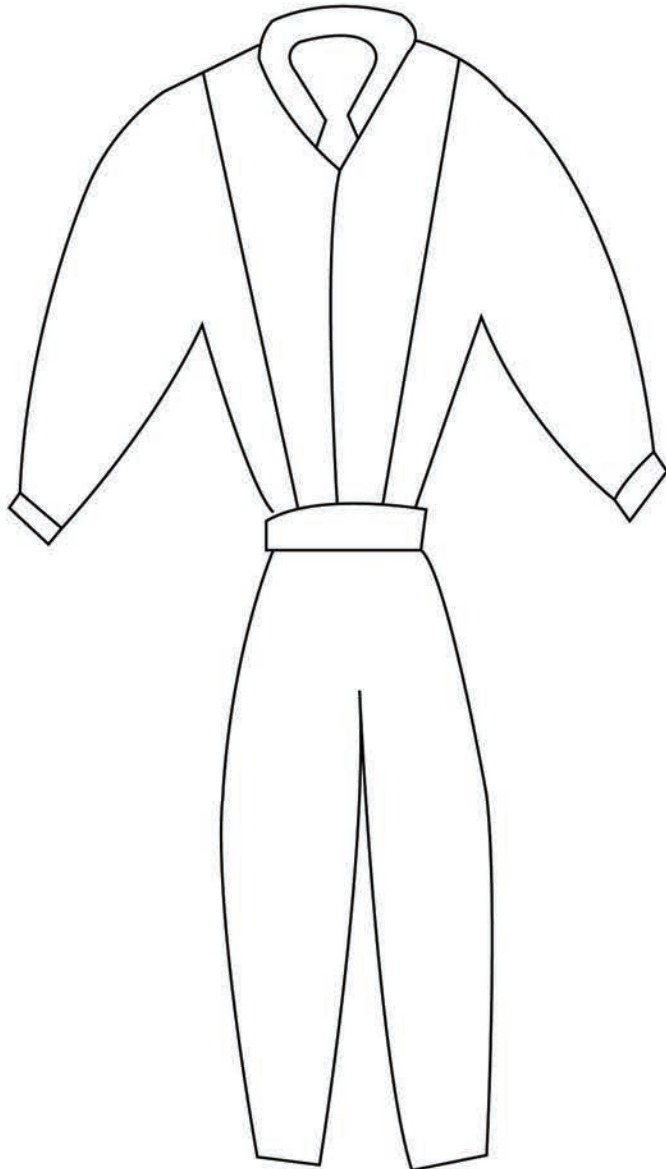


**White = Color 1
Gray = Color 2**

2 Color Suit



1 Color Suit



Kimono Suit



White = Color 1
Gray = Color 2

2 Color Suit

